

Quality Upgrades Plus Offered by Rosemont Homes GRAND OPENING "ENERGY STAR NEW HOME"



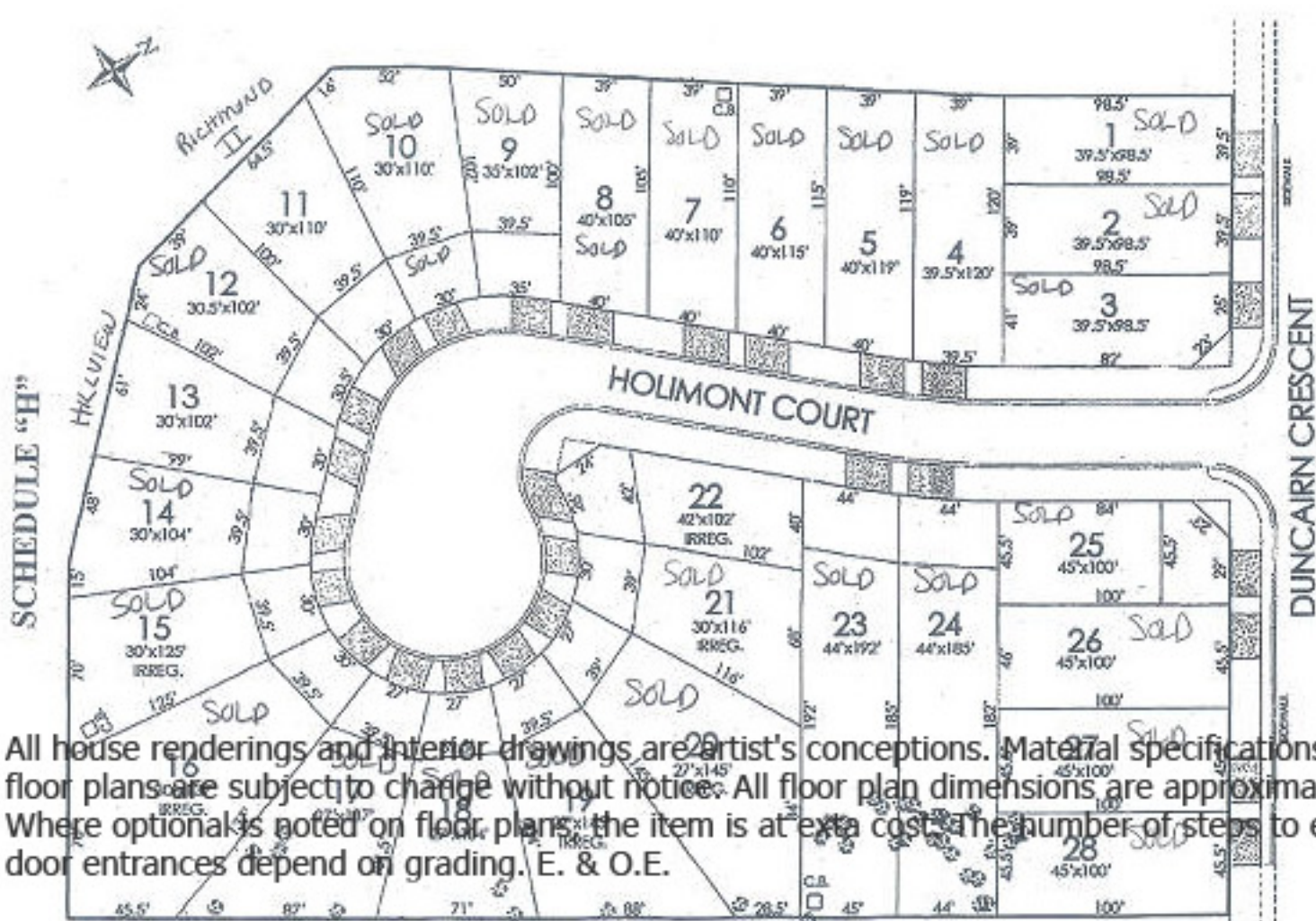
- ~ Full Foyer, Ceramics
- ~ Stone House Number
- ~ Stucco on Front Elevation
- ~ Upgraded Trim Package
- ~ All Closets have Doors (no Bi-Folds) &
- ~ Wire Shelves
- ~ Interior Columns as per Plan
- ~ Upgraded Underpad
- ~ One Piece Tub in Main Bathroom (Where applicable)
- ~ Fireplace Included

*** Plus an Extra \$3,500.00 of your choice of Appliance Package
*As per market drawings

This offer is for a limited time subject to change without notice - May not be applicable to Existing Model Homes

Duncairn Forest

off Garth and Garrow
Possession on Existing homes within 30 days.
Loads of Upgrades!
Two remaining model homes on site:
The Richmond II Model on Lot 11
& The Hillview Model on Lot 13
Appliance Package Available plus upgrades



All house renderings and interior drawings are artist's conceptions. Material specifications and floor plans are subject to change without notice. All floor plan dimensions are approximate. Where optional is noted on floor plans, the item is at extra cost. The number of steps to exterior door entrances depend on grading. E. & O.E.