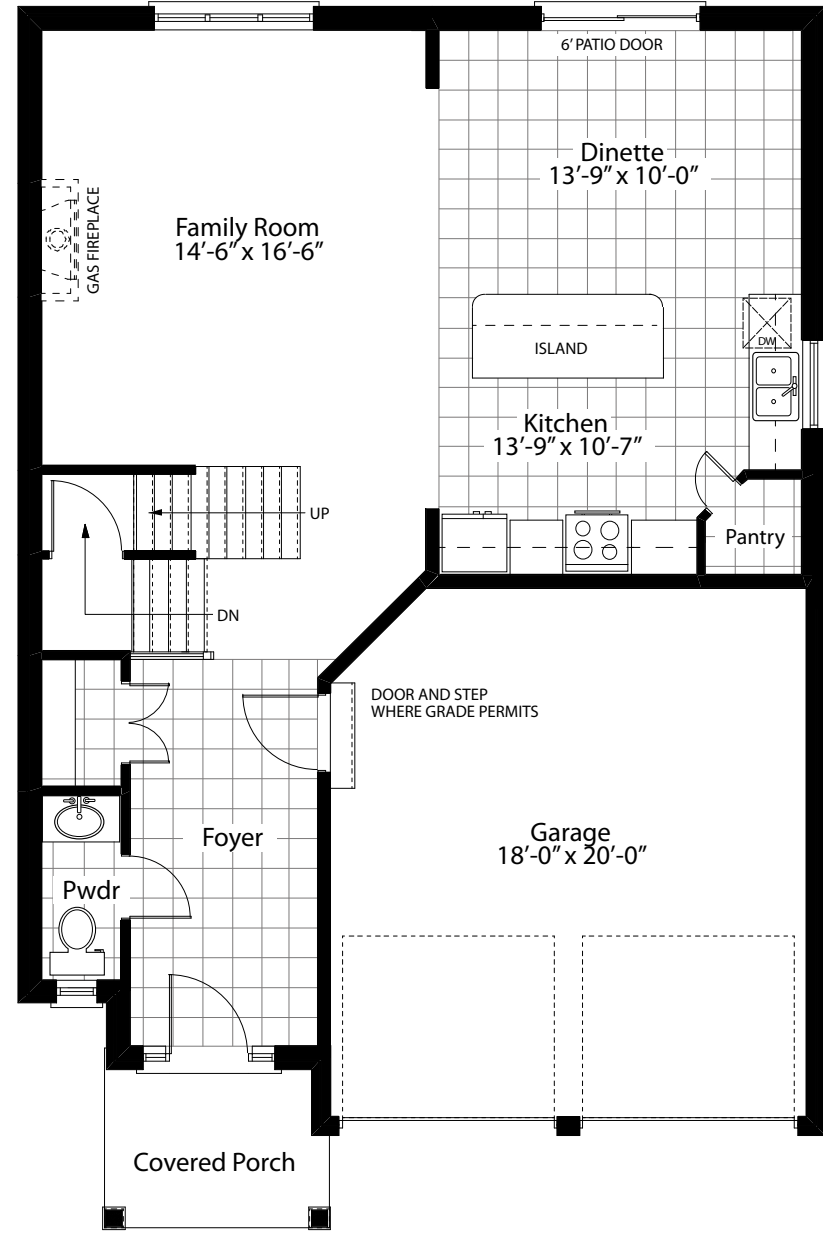
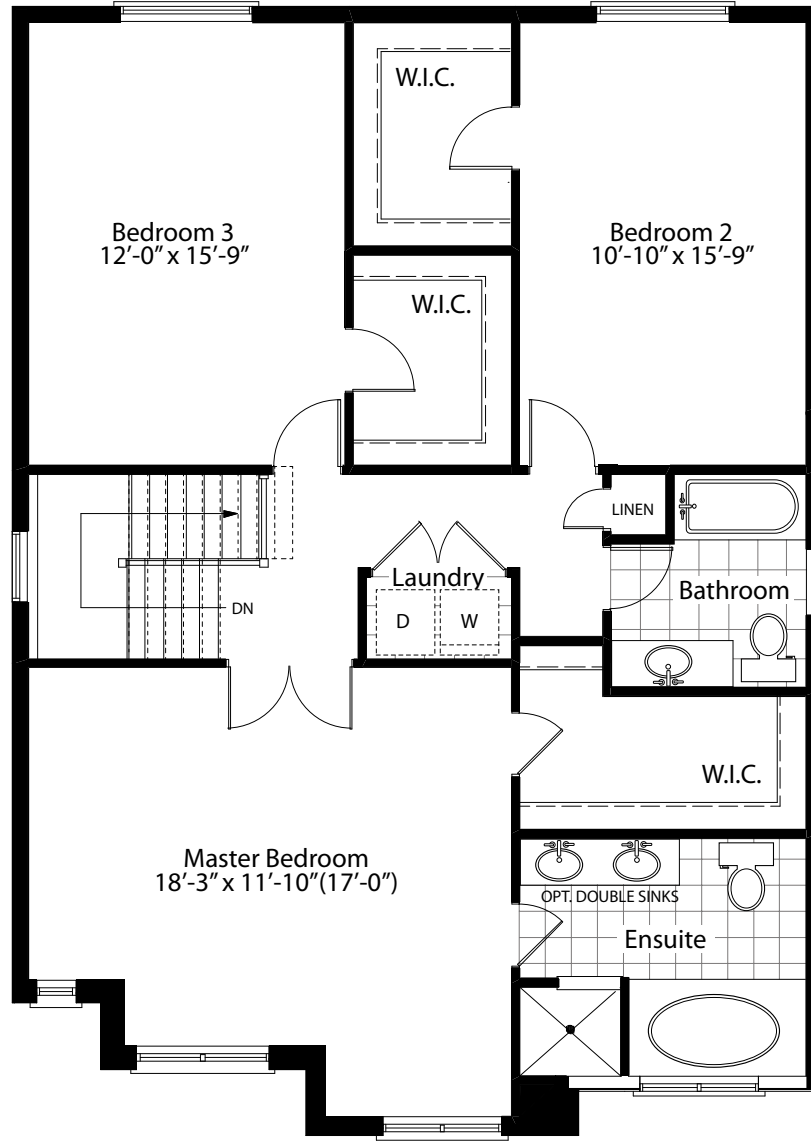


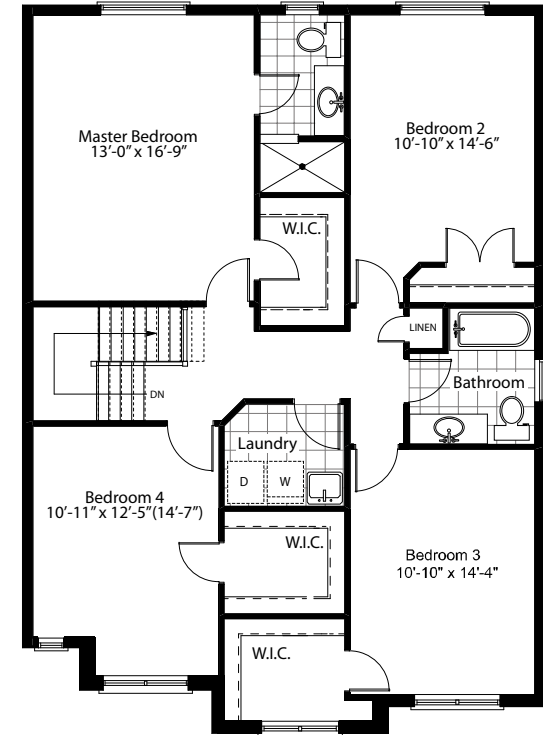
The Vermont • 2,066sq.ft.



GROUND FLOOR



SECOND FLOOR
3 Bedroom Layout



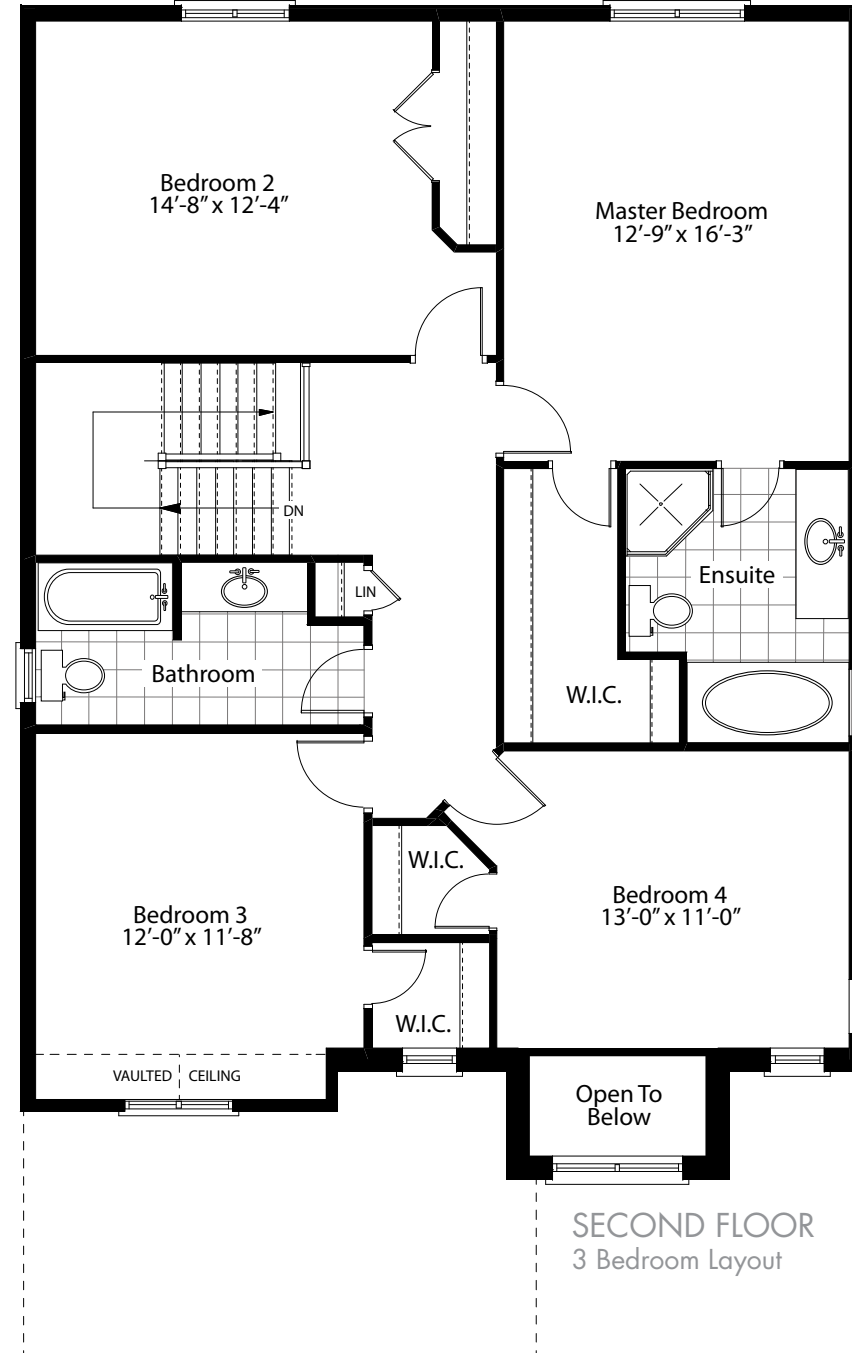
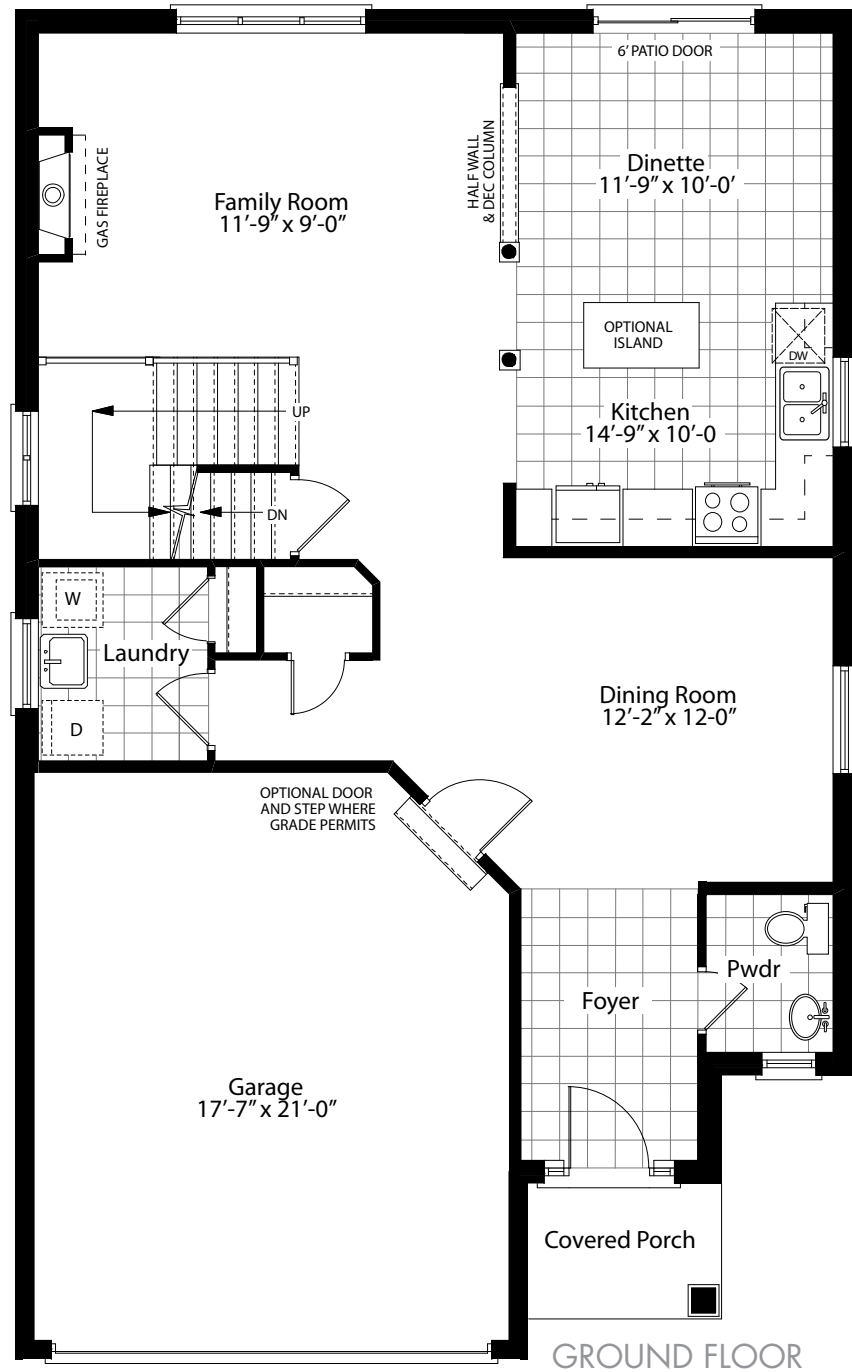
SECOND FLOOR
4 Bedroom Layout



VERMONT B

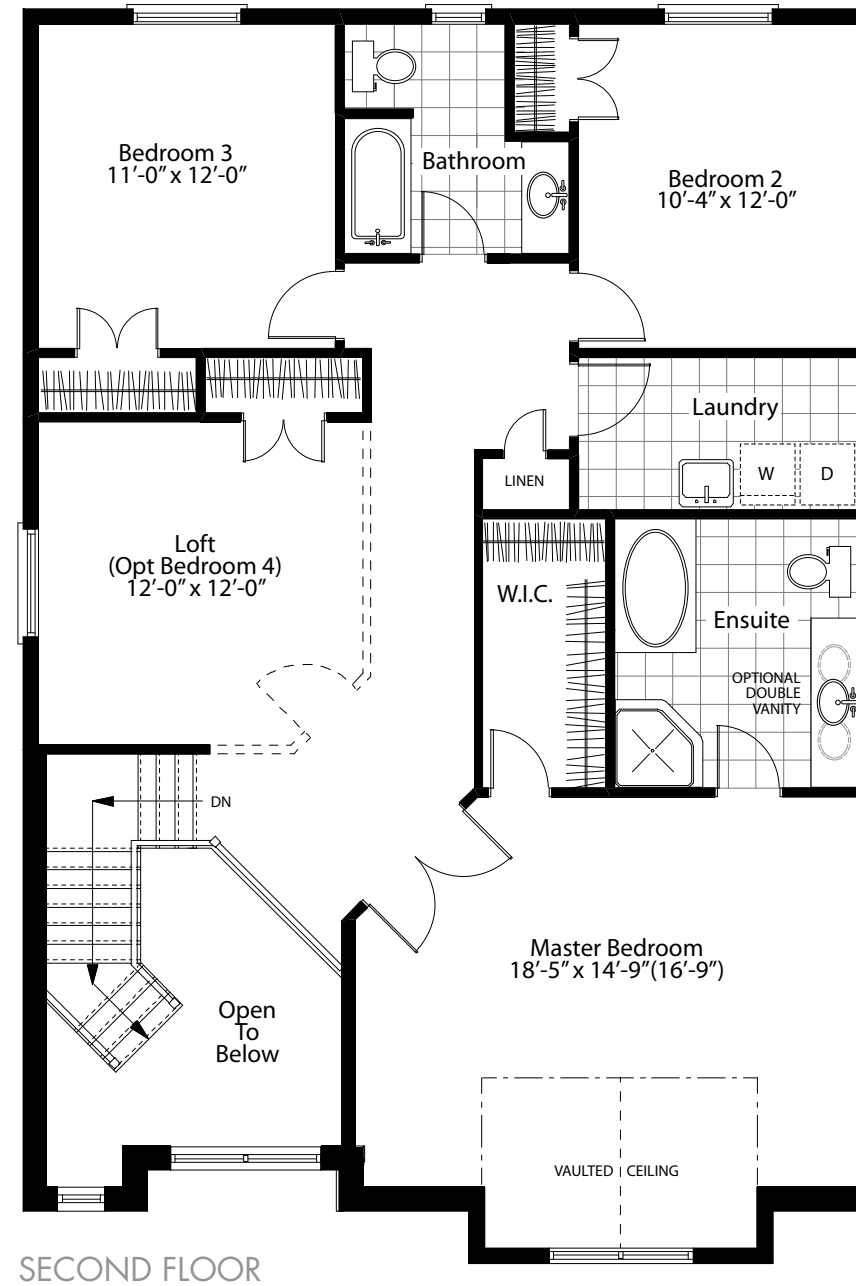
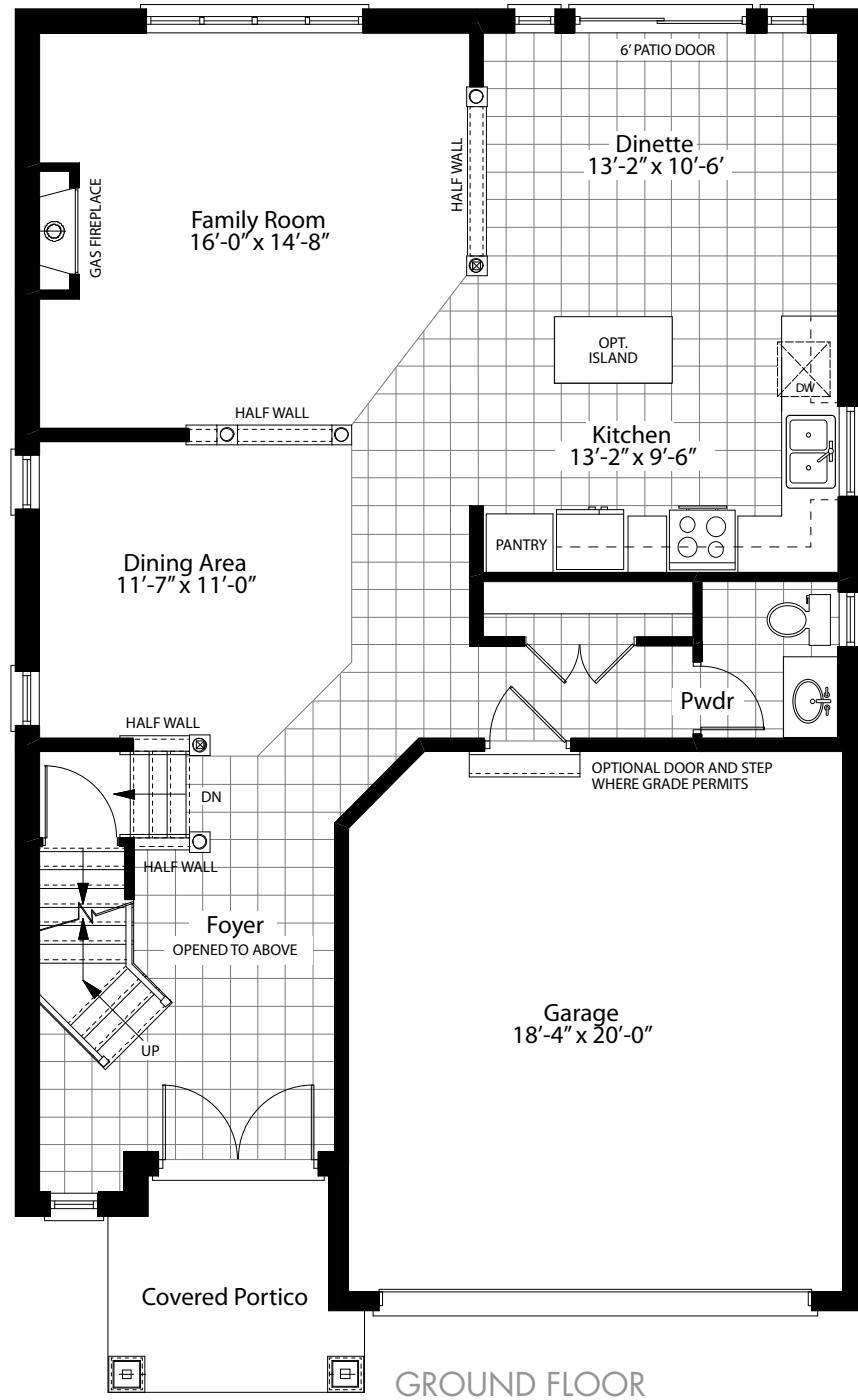
All floor plans have been drawn to scale. All measurements are approximate inside dimensions. Some items are optional. All renderings are artist concepts. Rosemont Homes reserves the right to make changes without notice. E. & O.E.

The Richmond • 2,354sq.ft. (Includes 38 sq.ft. of open area)



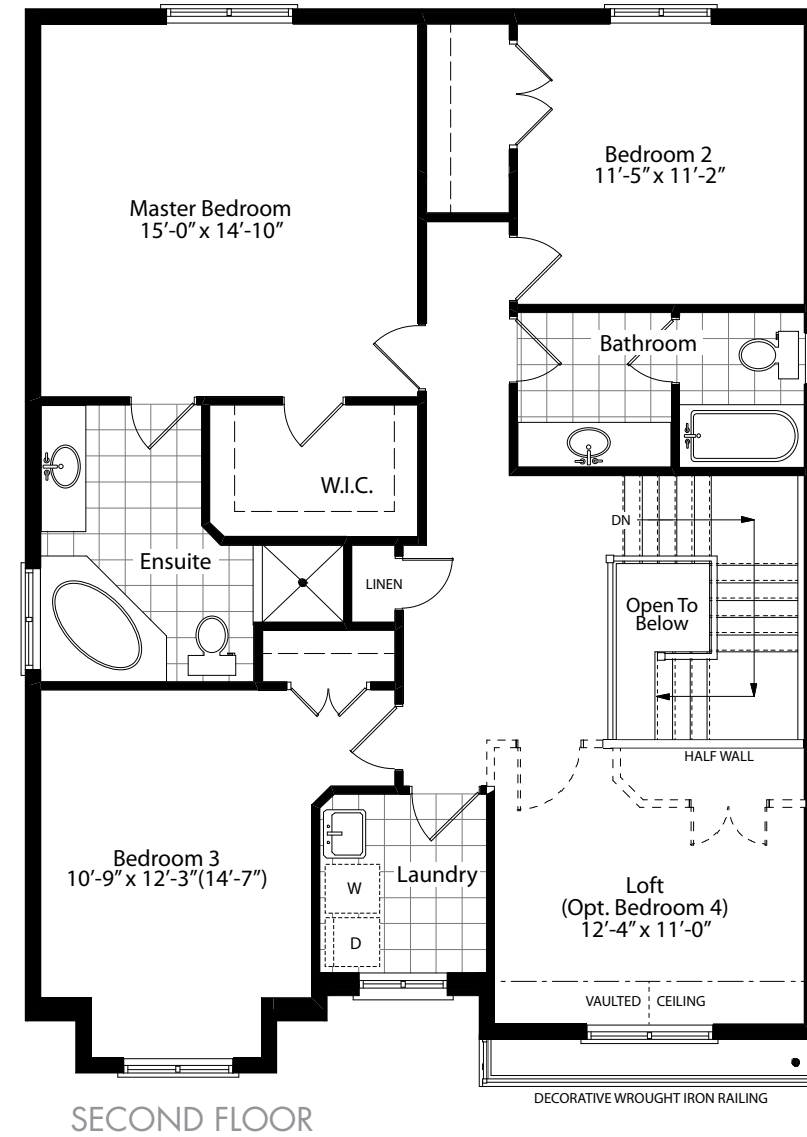
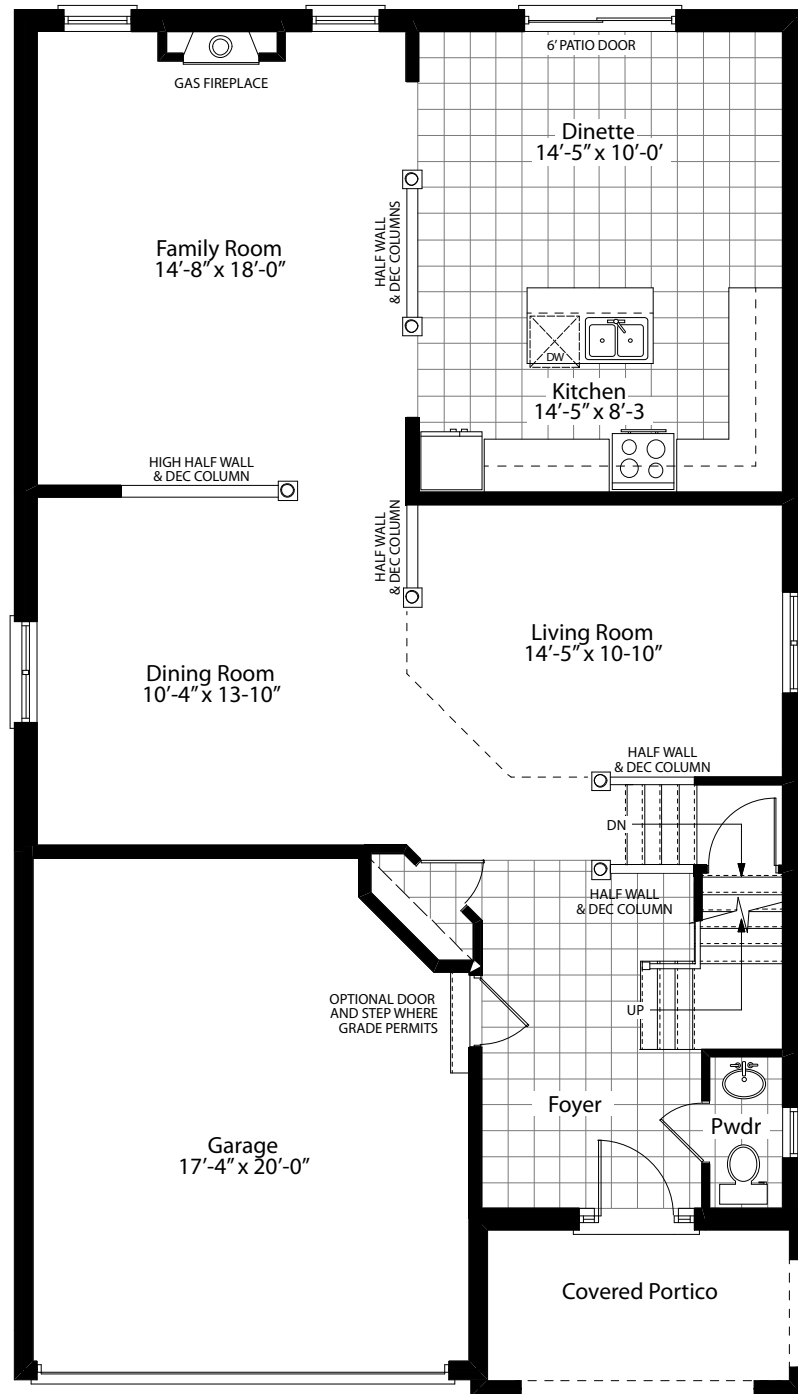
All floor plans have been drawn to scale. All measurements are approximate inside dimensions. Some items are optional. All renderings are artist concepts. Rosemont Homes reserves the right to make changes without notice. E. & O.E.

The Rosehill • 2,484sq.ft. (Includes 136 sq.ft. of open area)



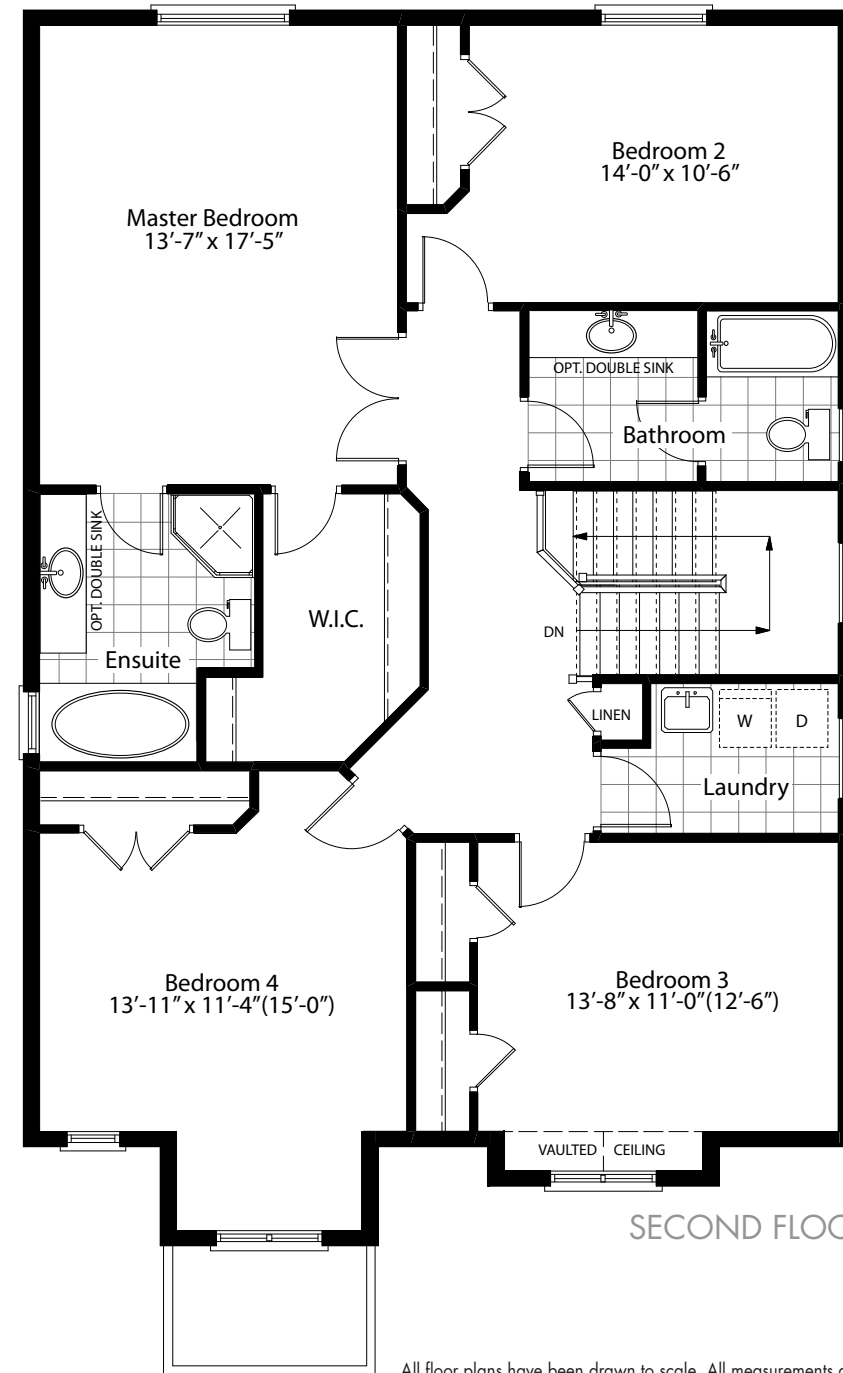
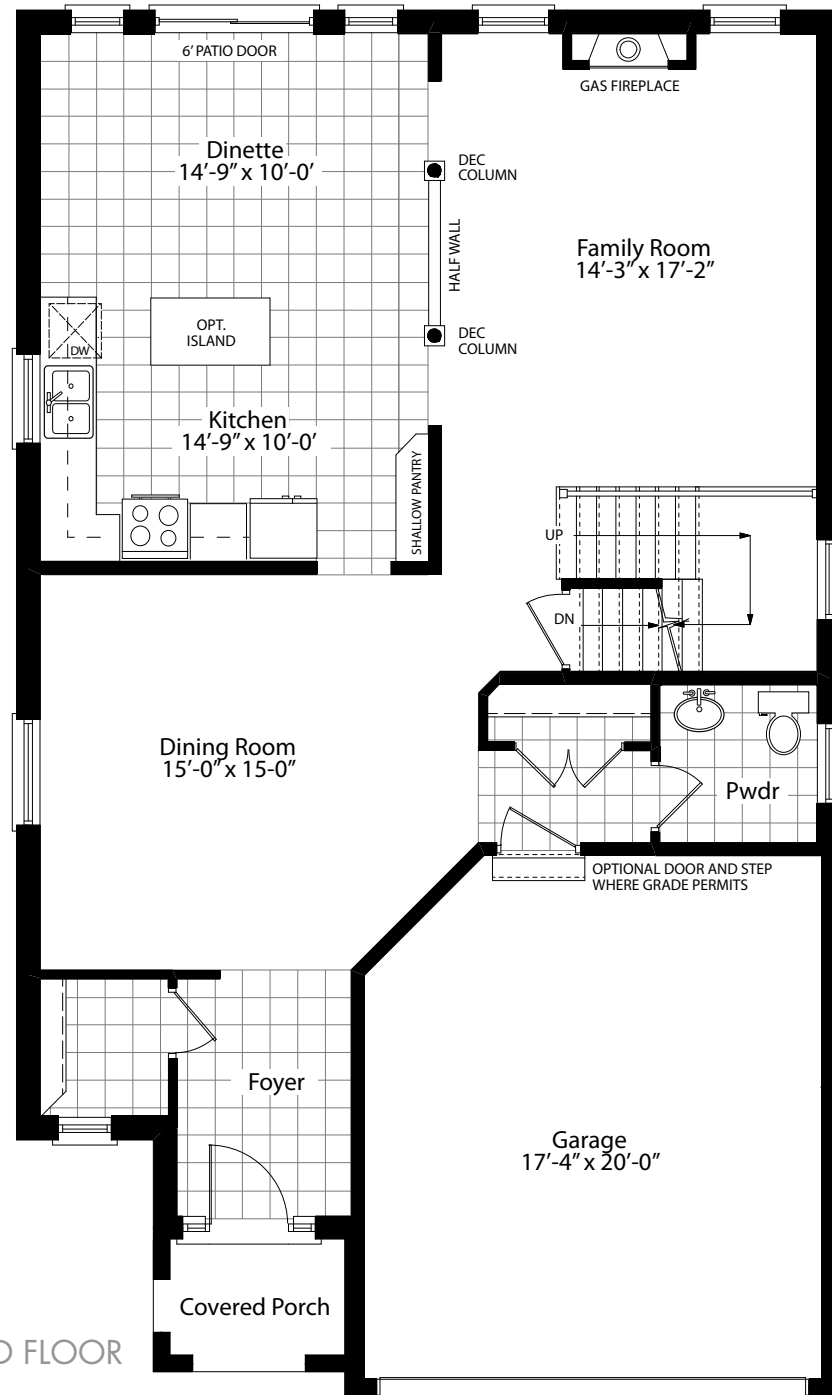
All floor plans have been drawn to scale. All measurements are approximate inside dimensions. Some items are optional. All renderings are artist concepts. Rosemont Homes reserves the right to make changes without notice. E. & O.E.

The Ridgefield • 2,543sq.ft.



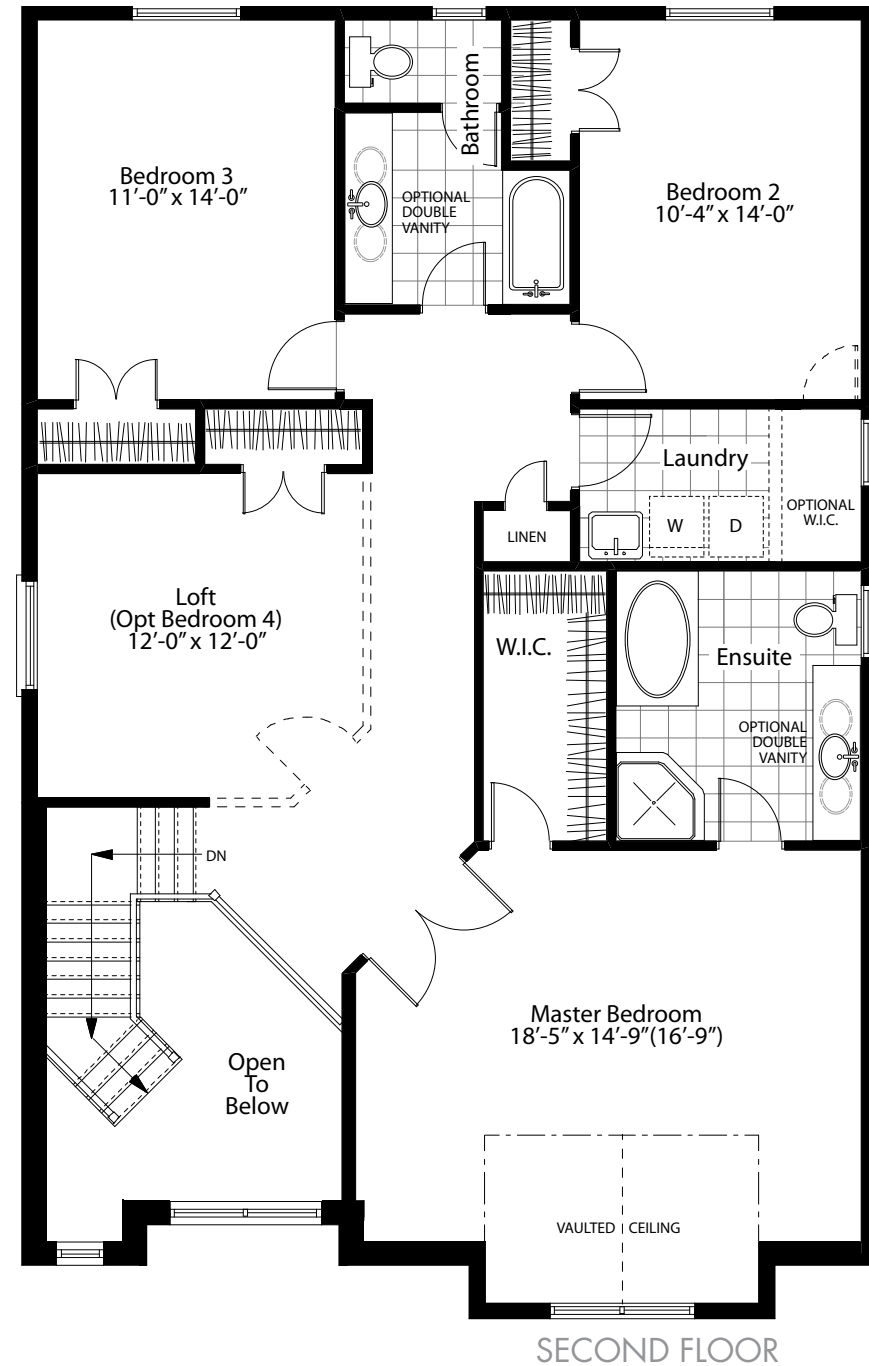
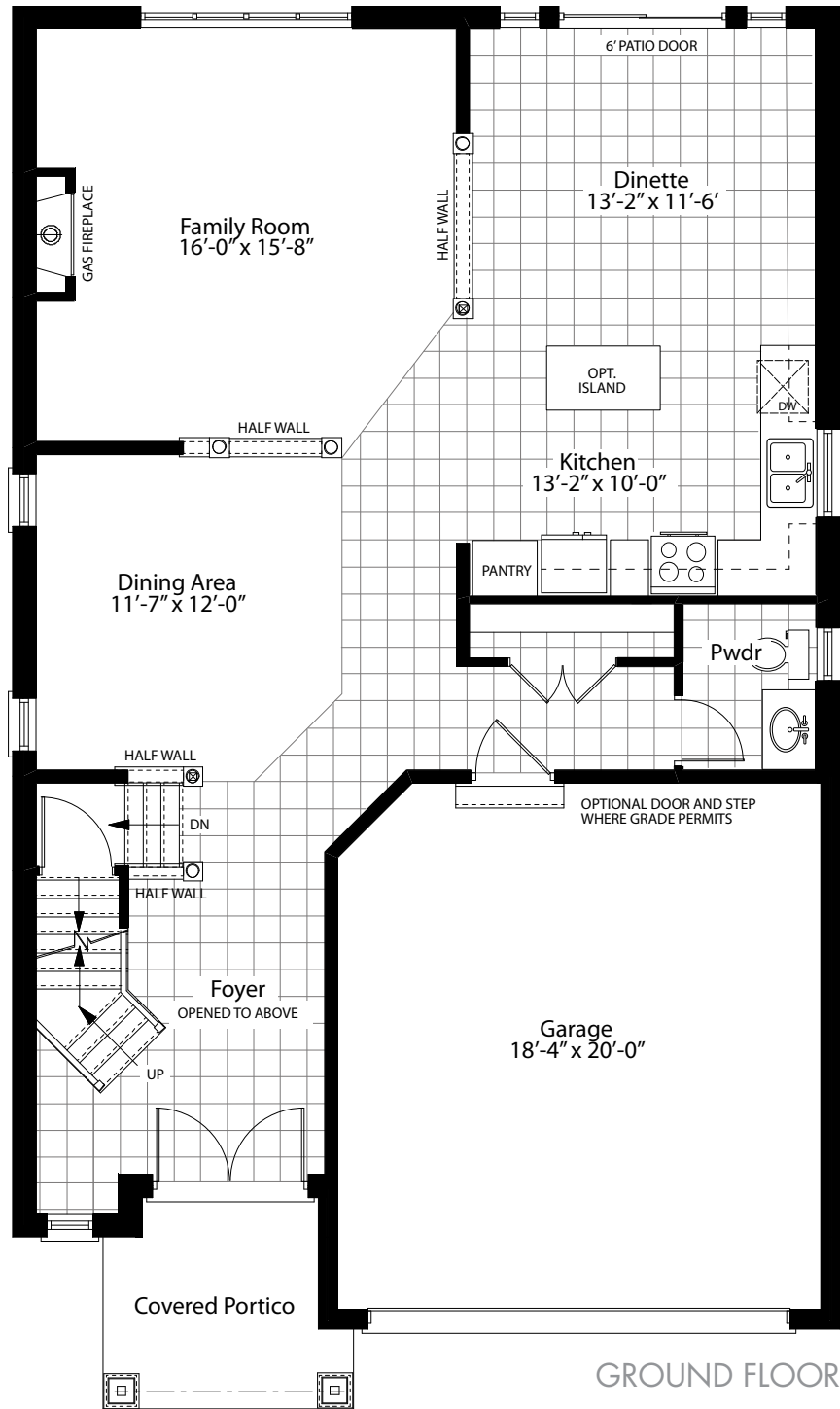
All floor plans have been drawn to scale. All measurements are approximate inside dimensions. Some items are optional. All renderings are artist concepts. Rosemont Homes reserves the right to make changes without notice. E. & O.E.

The Maple Rich • 2,572sq.ft.



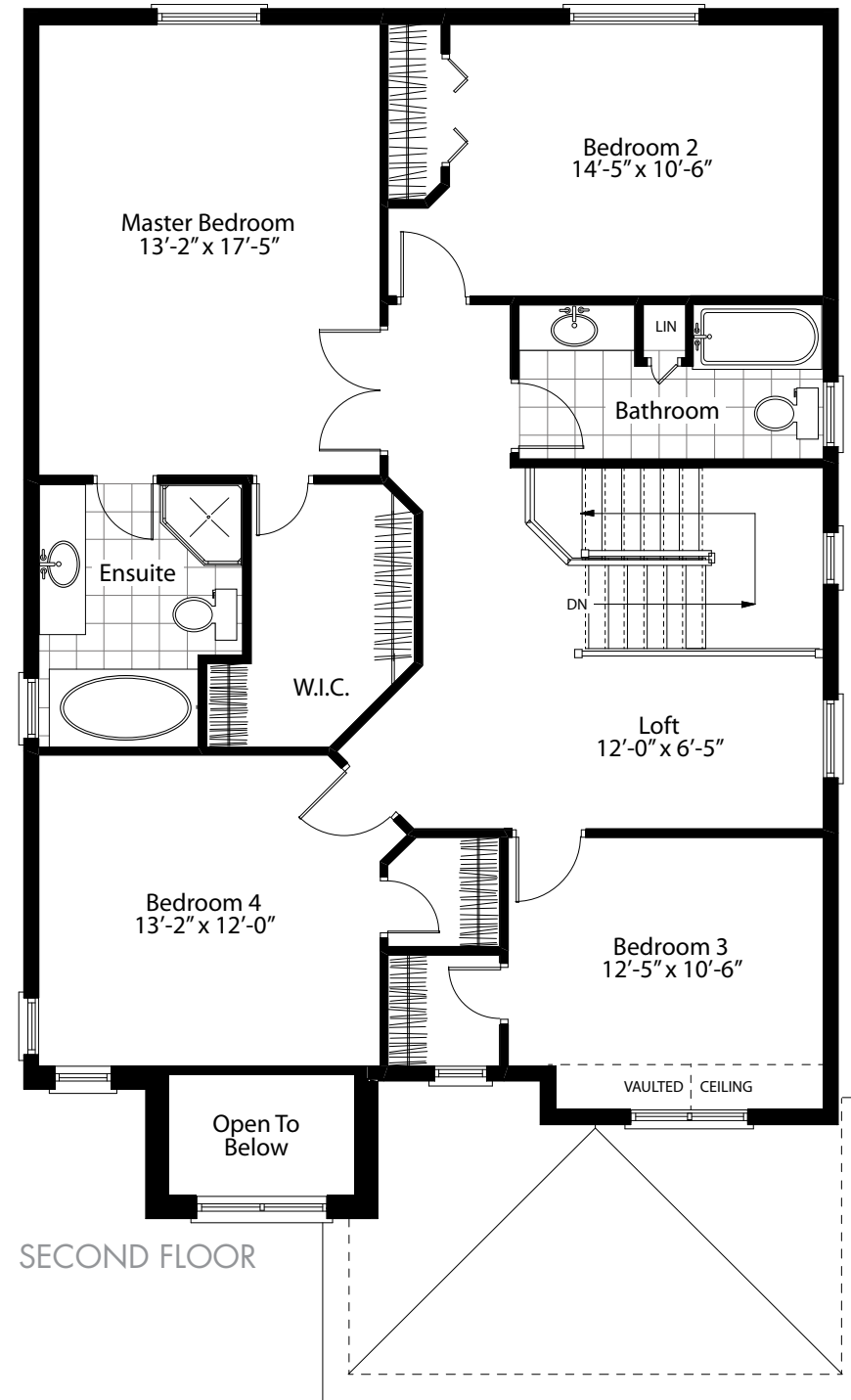
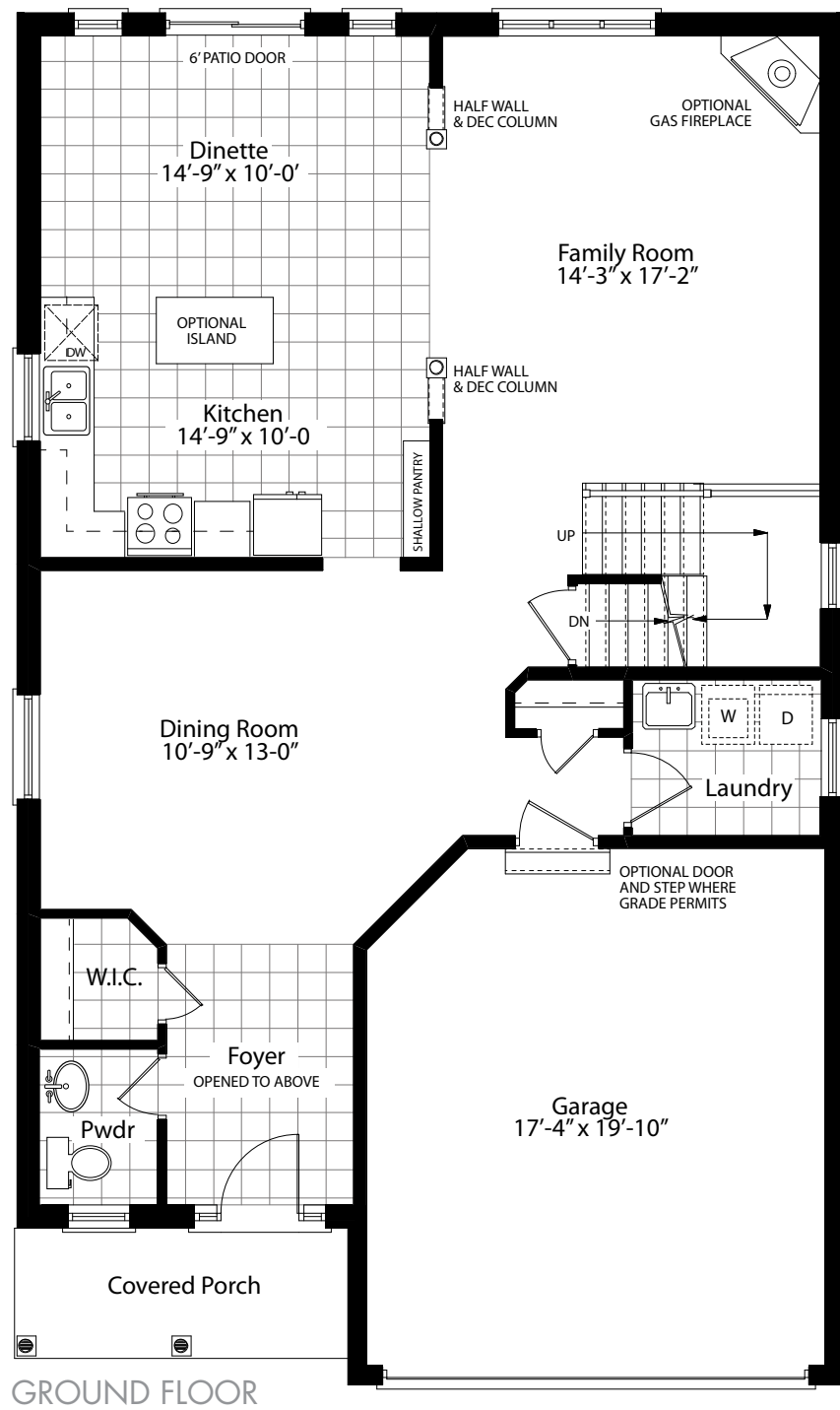
All floor plans have been drawn to scale. All measurements are approximate inside dimensions. Some items are optional. All renderings are artist concepts. Rosemont Homes reserves the right to make changes without notice. E. & O.E.

The Rosehill II • 2,575sq.ft. (Includes 136 sq.ft. of open area)



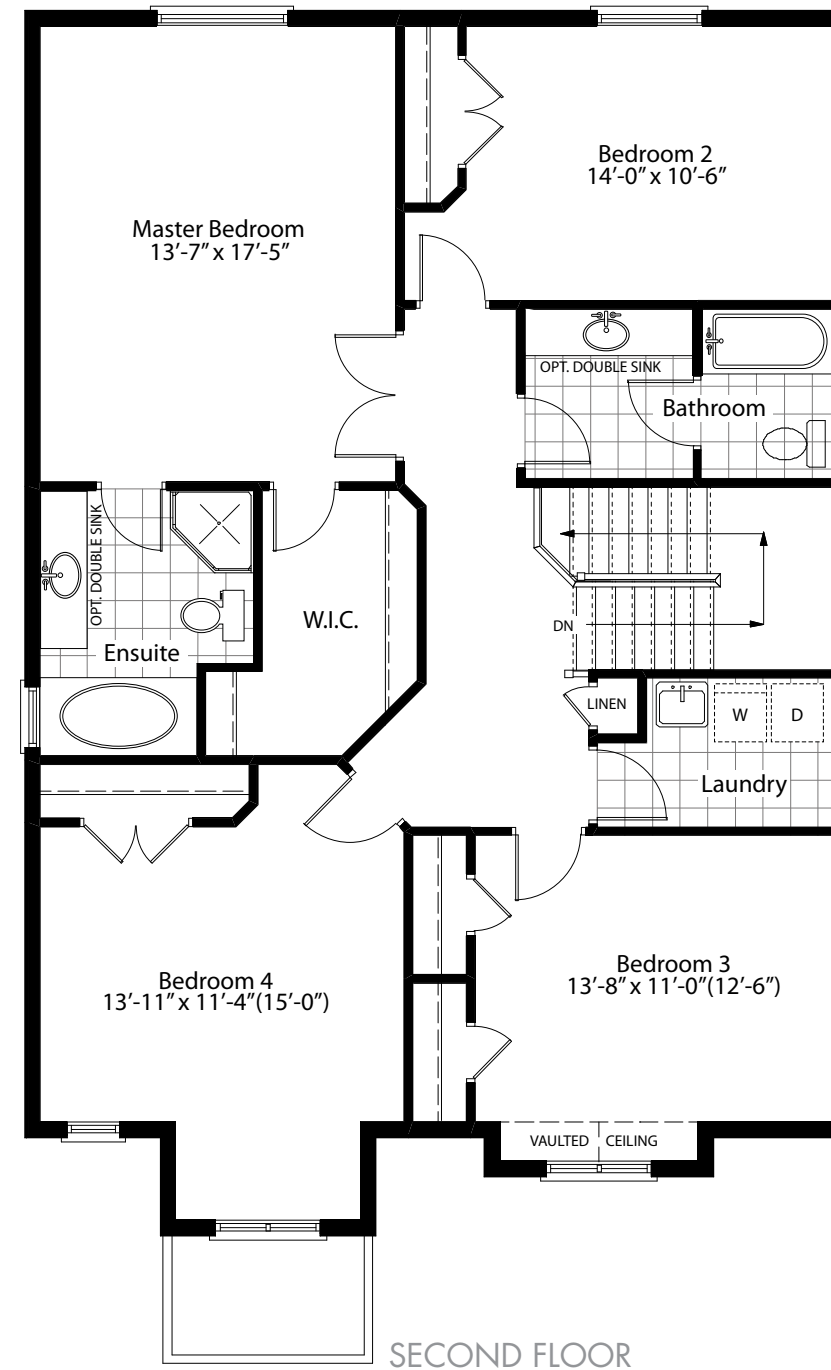
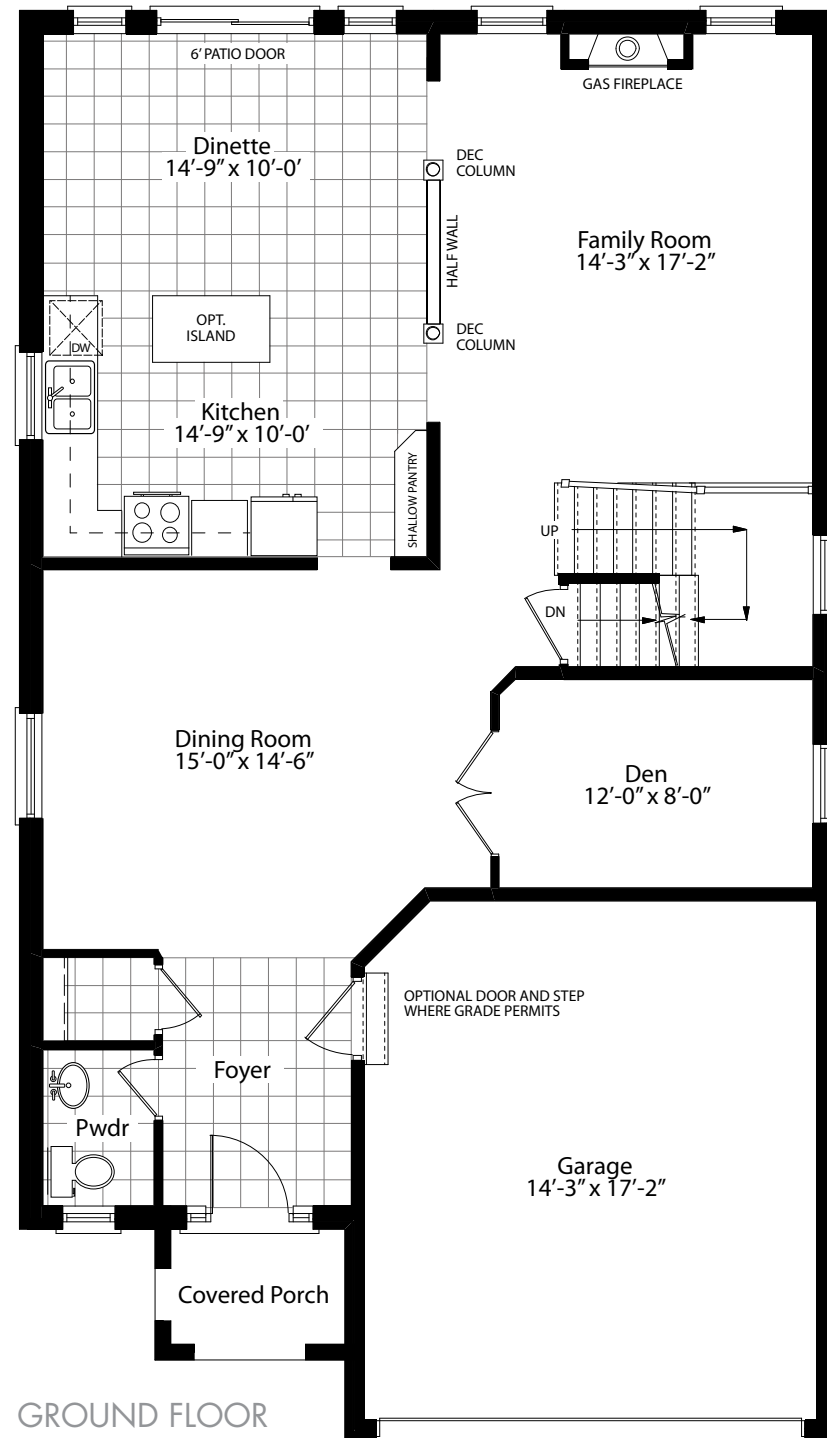
All floor plans have been drawn to scale. All measurements are approximate inside dimensions. Some items are optional. All renderings are artist concepts. Rosemont Homes reserves the right to make changes without notice. E. & O.E.

The Richmond III • 2,581 sq.ft. (Includes 38 sq.ft. of open area)



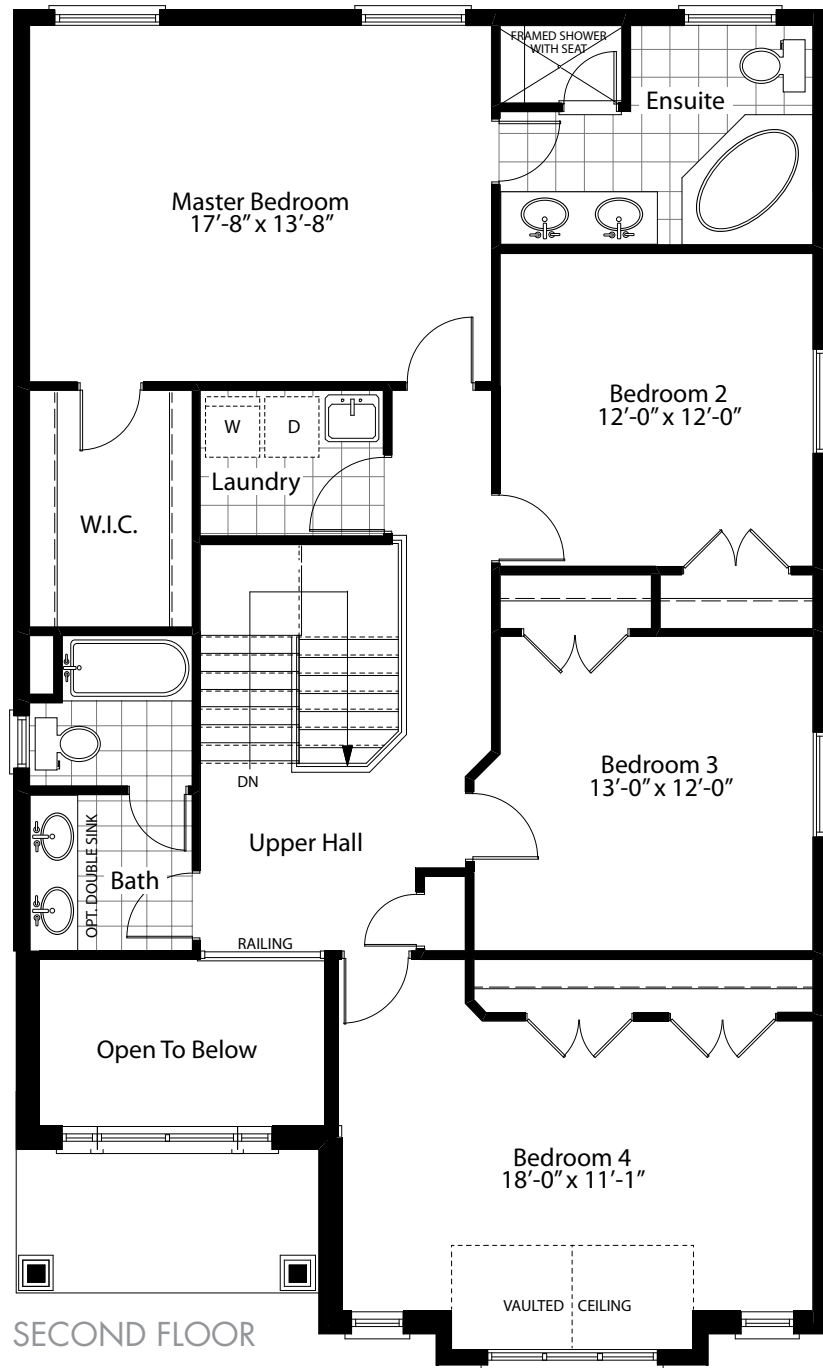
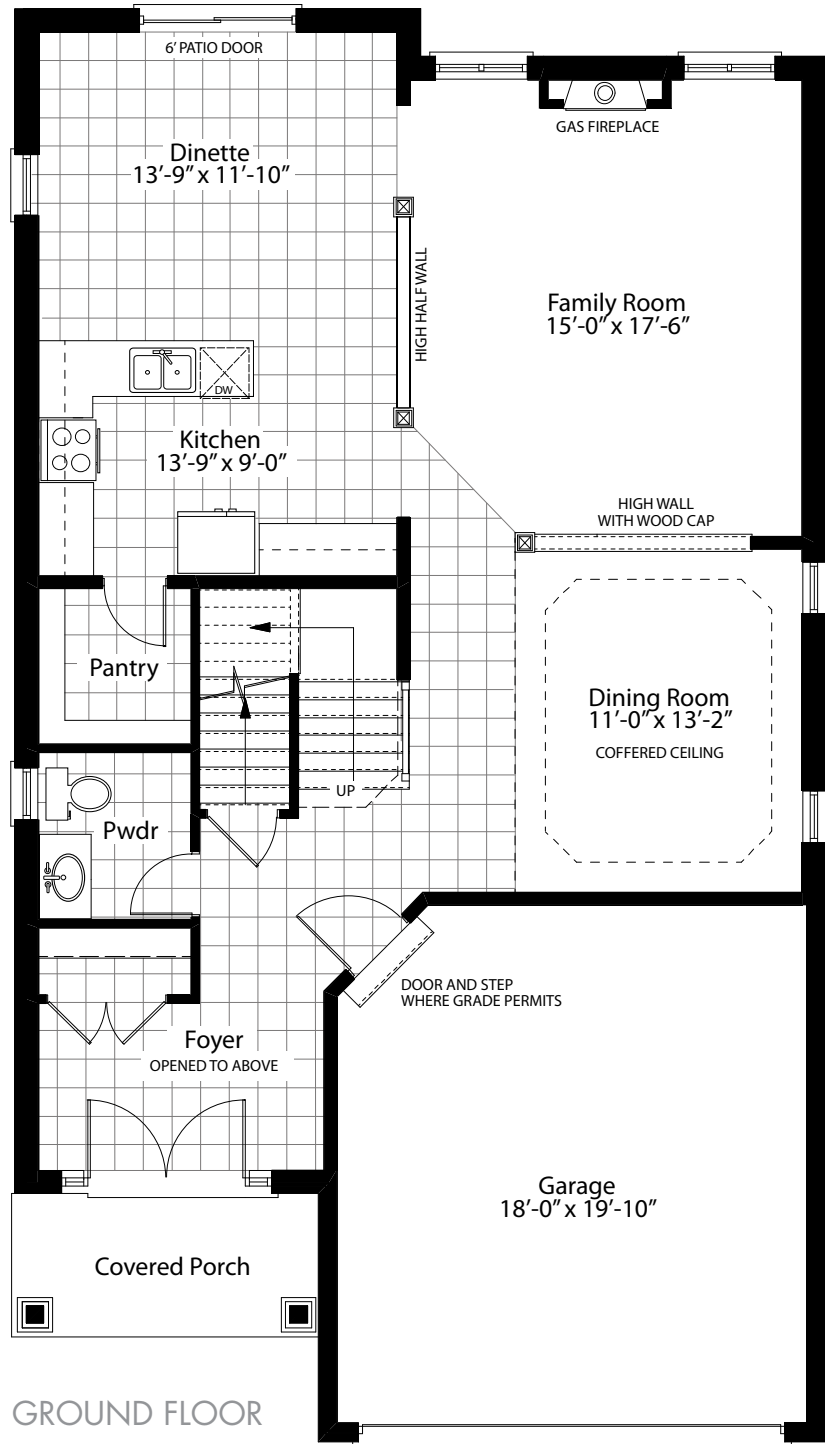
All floor plans have been drawn to scale. All measurements are approximate inside dimensions. Some items are optional. All renderings are artist concepts. Rosemont Homes reserves the right to make changes without notice. E. & O.E.

The Maple Rich II • 2,620sq.ft.



All floor plans have been drawn to scale. All measurements are approximate inside dimensions. Some items are optional. All renderings are artist concepts. Rosemont Homes reserves the right to make changes without notice. E. & O.E.

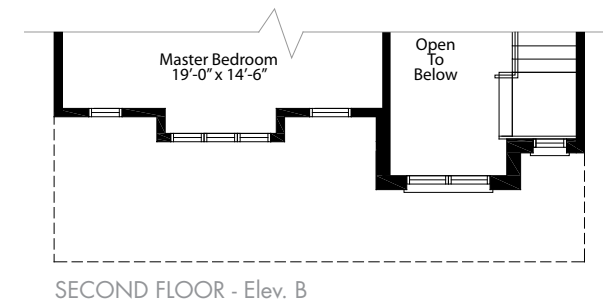
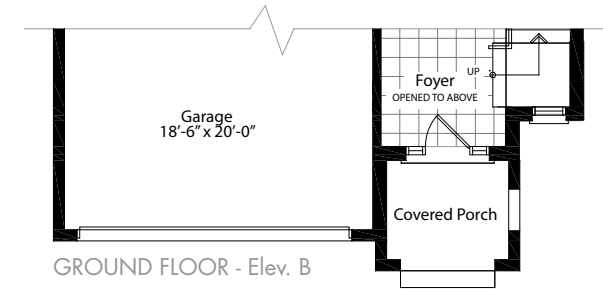
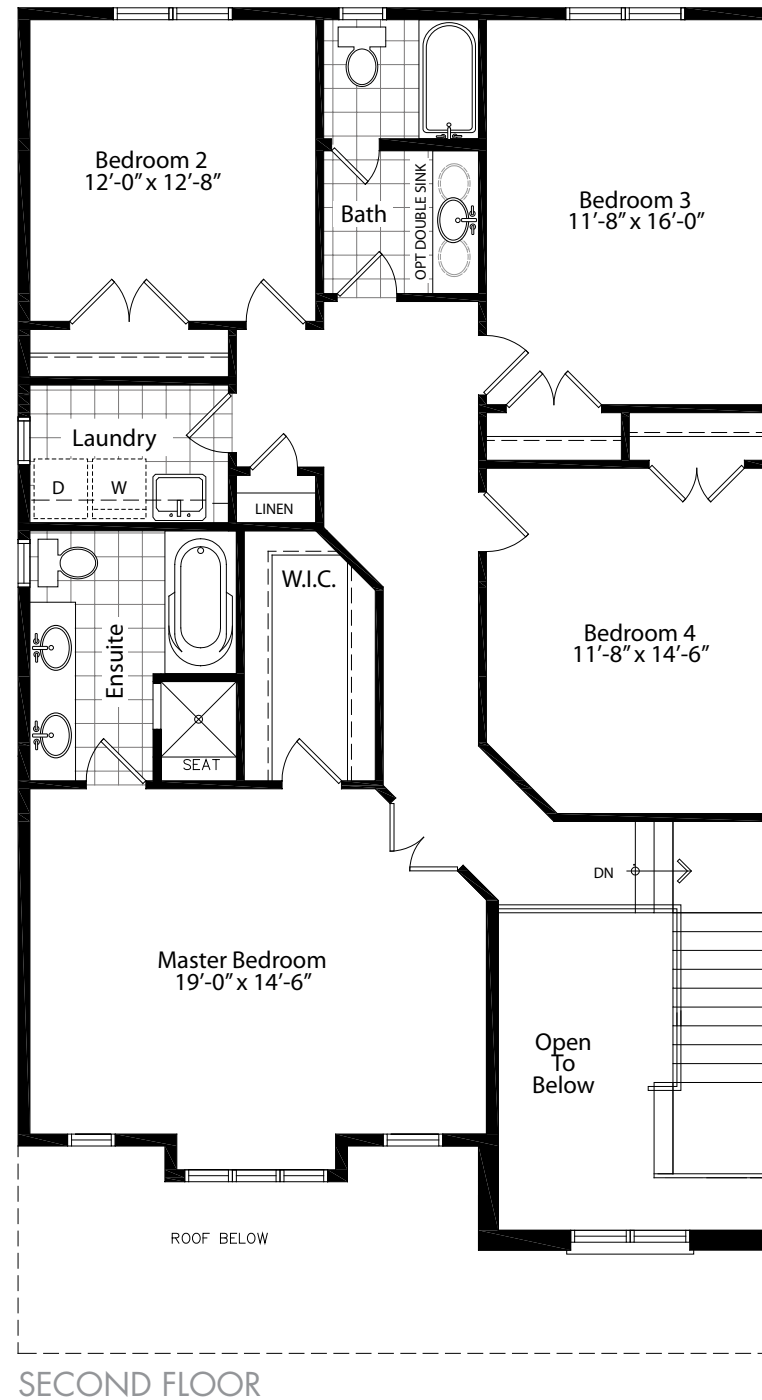
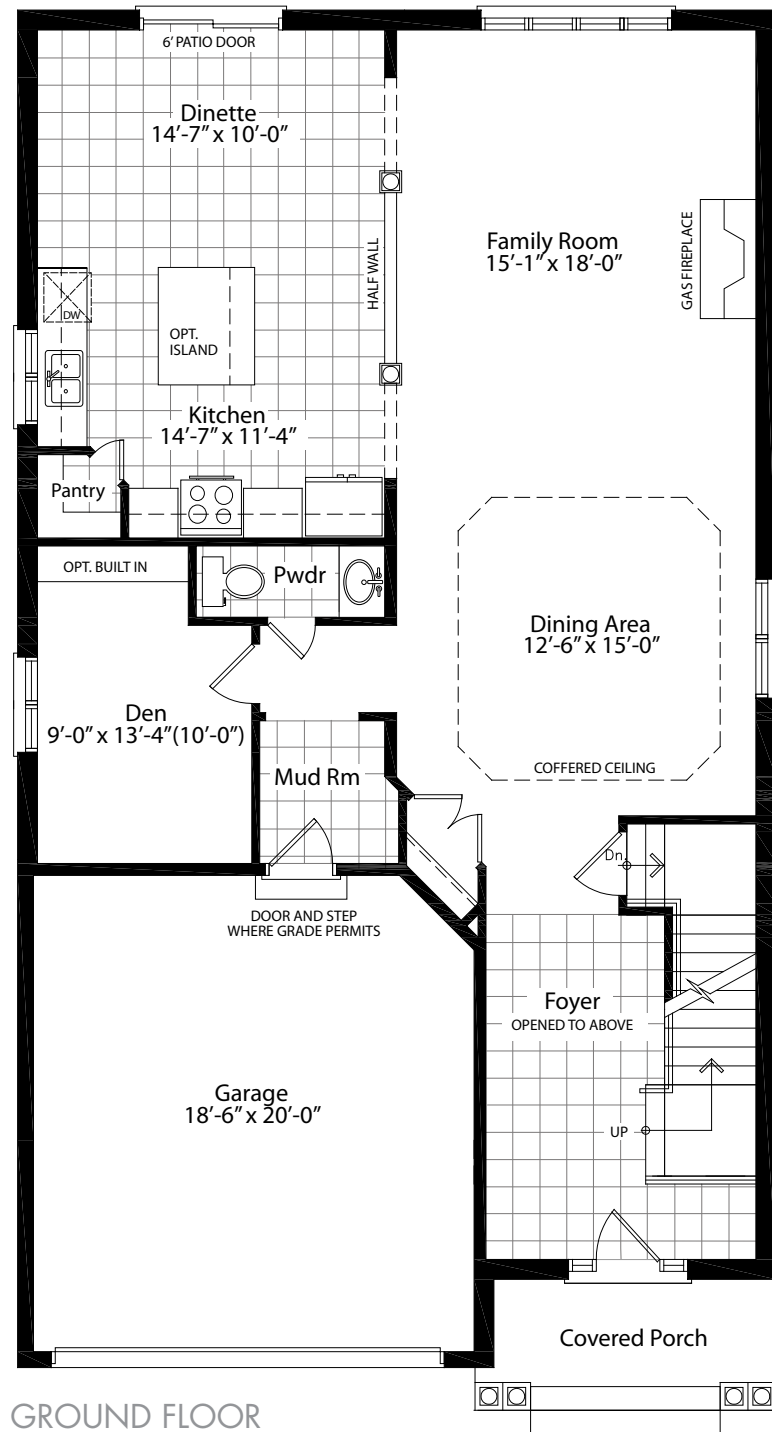
The Fairlane II • 2,669sq.ft. (Includes 68 sq.ft. of open area)



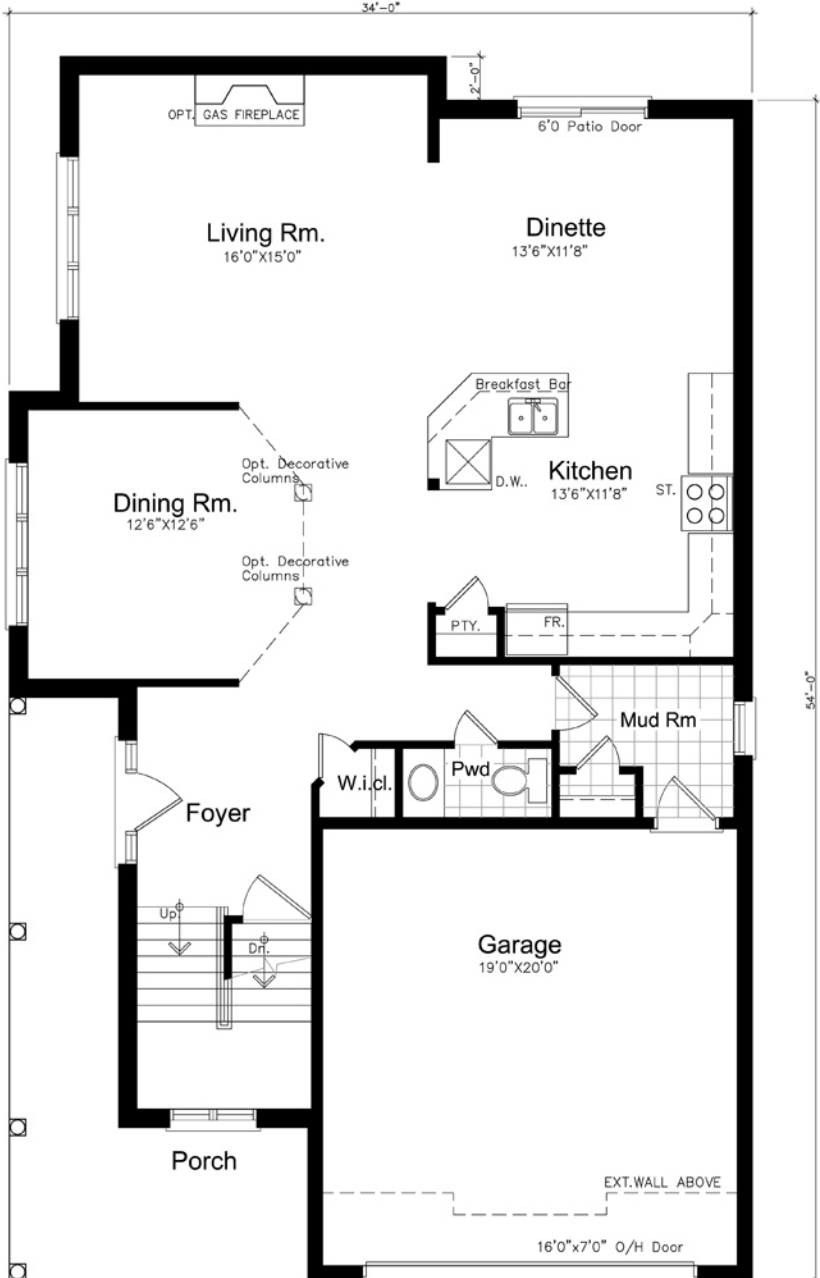
FAIRLANE B

All floor plans have been drawn to scale. All measurements are approximate inside dimensions. Some items are optional. All renderings are artist concepts. Rosemont Homes reserves the right to make changes without notice. E. & O.E.

The Cabernet • 2,975sq.ft. (Includes 180 sq.ft. of open area)

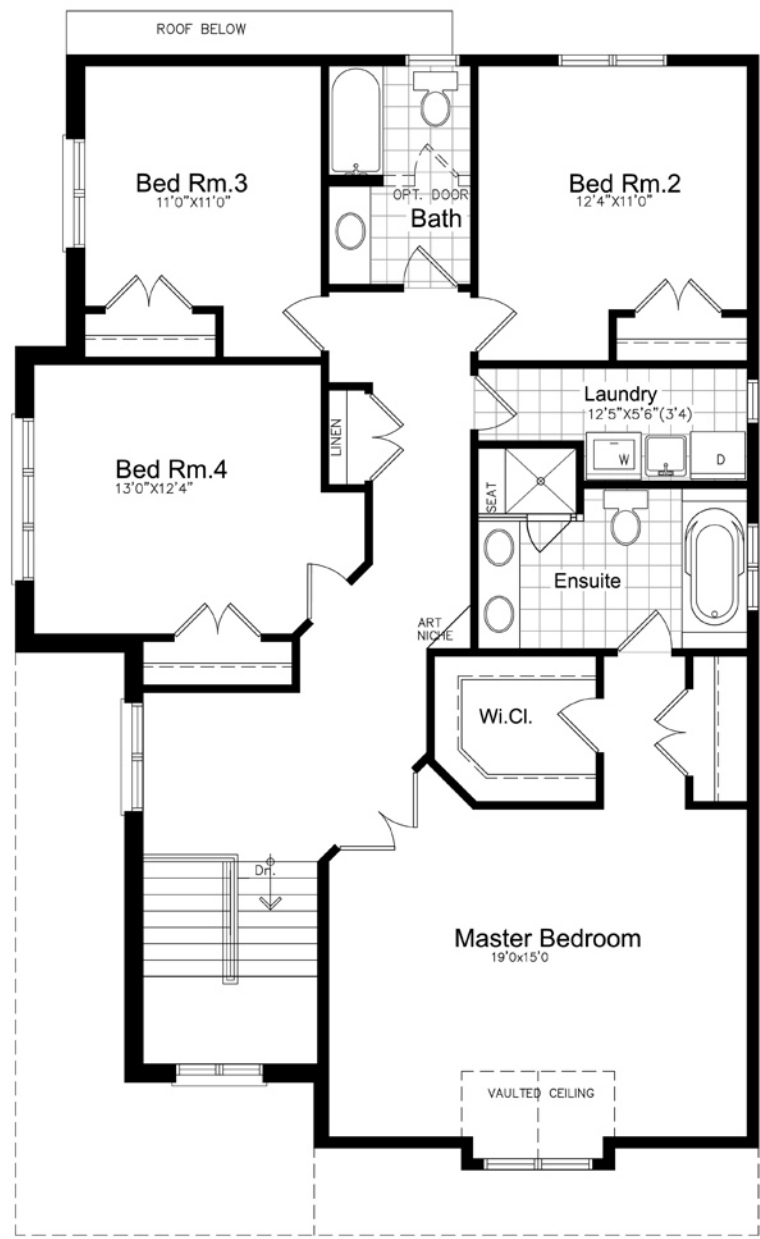


All floor plans have been drawn to scale. All measurements are approximate inside dimensions. Some items are optional. All renderings are artist concepts. Rosemont Homes reserves the right to make changes without notice. E. & O.E.

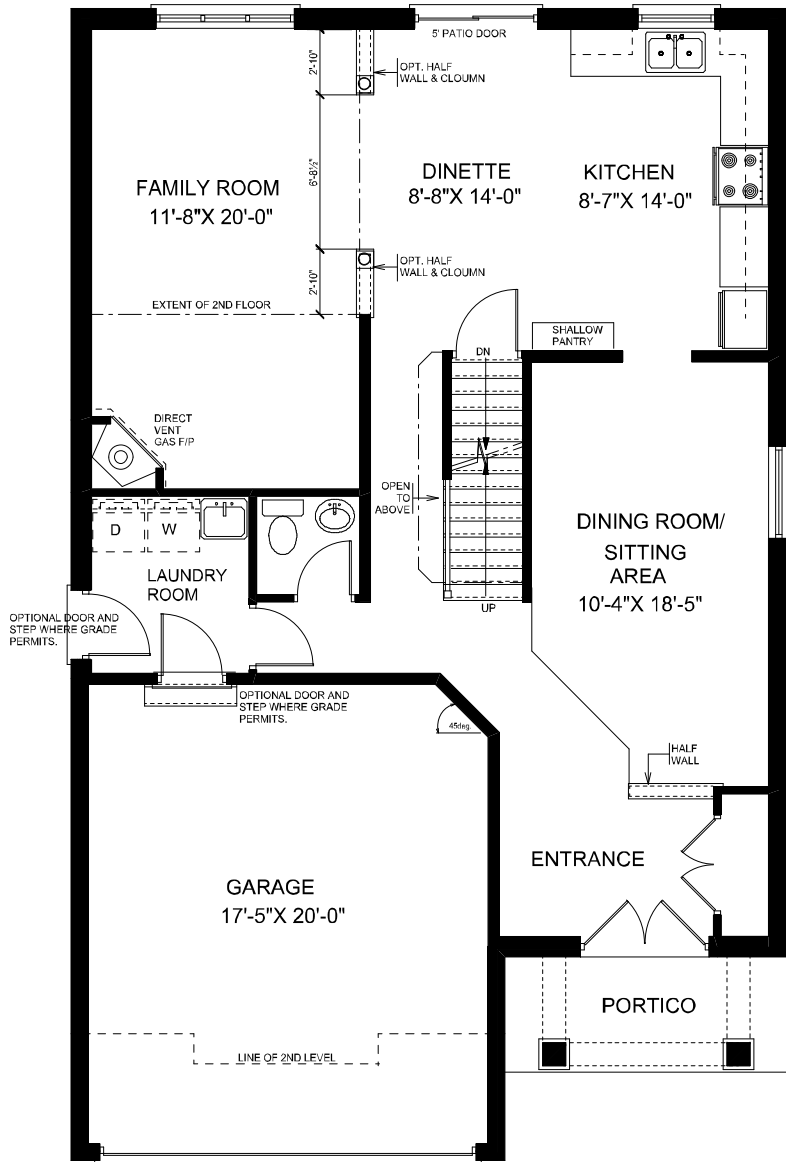


Corner Ground Floor Plan
1230 Sq. Ft.
TOTAL: 2795 Sq. Ft.

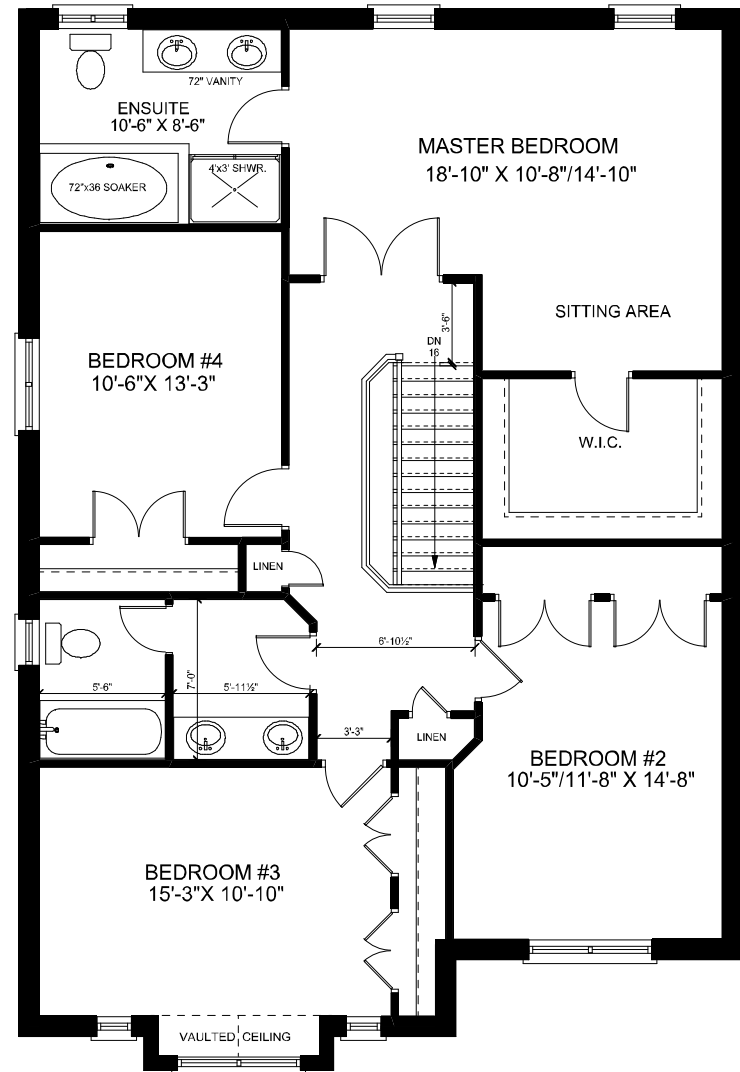
The Syrah



Corner Second Floor Plan
1565 Sq. Ft. (including 115 Sq. Ft. of open area)



Ground Floor - 1072sf



Second Floor - 1373 sf

The Newberry II - Lot 16 Nicosia Rd.
 April 12, 2012
 revised April 17, 2012